

Fitting Instructions

Revo Coolant Hose Relocation Kit VAG 2.0/1.8 TFSI/TSI MQB

Fitting Difficulty



Contents

Description	
Revo Coolant Hose	1
Pipe Caps	2

Recommended Tools

Tools	Size
Ratchet	
Sockets	8mm
Torx Bits	T25
Constant Tension Pliers	



Before starting, please ensure that the battery is disconnected and the engine is cool. Engine temperatures can remain high for a substantial amount of time after use.



Fitting Instructions

Fitting Difficulty



Revo Coolant Hose Relocation Kit VAG 2.0/1.8 TFSI/TSI MQB



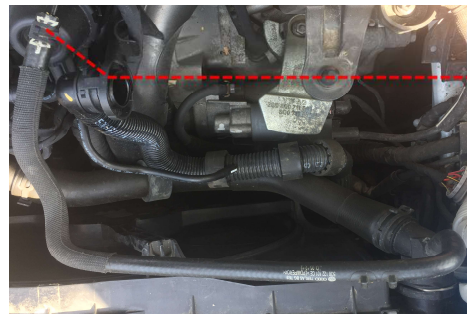
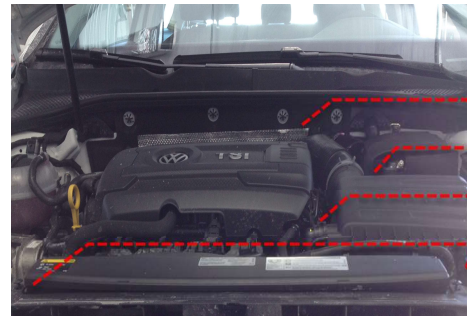
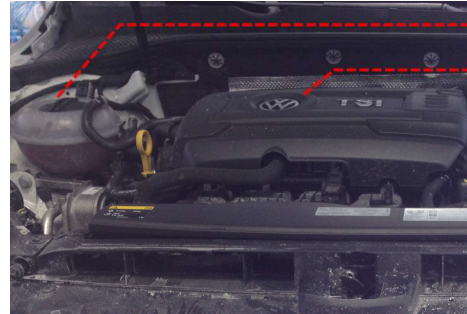
Installation was performed on a MK7 Golf. Installation on other vehicles will be similar but may not be exact.

- 1 Ensure the vehicle coolant is cold. Remove the coolant reservoir cap slowly to relieve any pressure left in the coolant system. Remove the plastic engine cover by pulling directly upward to disengage the rubber mounting points.

- 2 Remove the front and main airbox section. Start by loosening the hose clamp at the turbo inlet using an 8mm socket. Remove the 2 x T25 screws on the front airbox section. Disconnect the small vacuum line and secondary air pump feed (if equipped). Pull the main airbox directly upward to disengage from the rubber mounting points. Set the airbox aside.

- 3 Double check the coolant reservoir cap has been removed. Using constant tension pliers, loosen the hose clamp and disconnect the OE hose from the metal hard pipe in the area shown. Insert the cap (supplied) over the metal pipe. Note: a very small amount of coolant will leak from the metal pipe and OE hose.

- 4 Place the remaining cap (supplied) within reach. Using constant tension pliers, loosen the clamp in the area shown. Remove the OE hose and quickly install the supplied cap to prevent excessive coolant loss.



Fitting Instructions

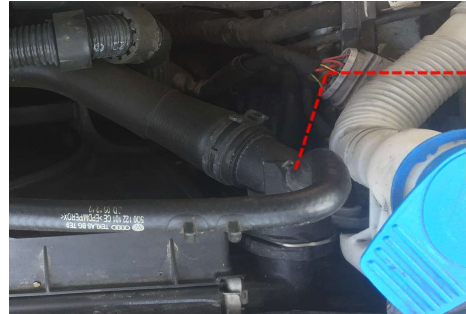
Fitting Difficulty



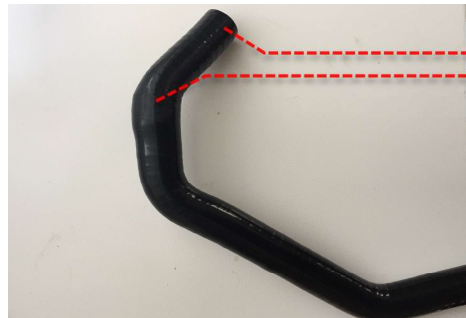
Revo Coolant Hose Relocation Kit VAG 2.0/1.8 TFSI/TSI MQB

- 5 Remove the plastic check valve from the OE hose. Take note of the orientation of the check valve in the hose, it will need to be installed into the Revo hose in the same configuration.

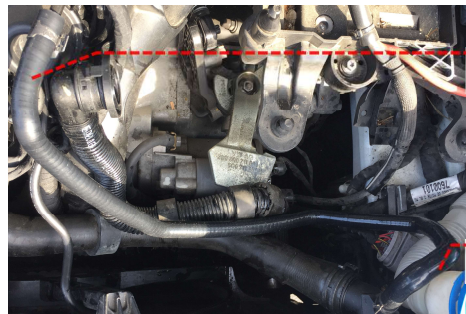
Note: it may be possible to remove the check valve by clamping behind the valve location with pliers and moving the hose to slowly dislodge the valve, to allow the OE hose to be reused. If the OE hose can be discarded, cut the hose to remove the check valve.



- 6 Clean and lightly grease the exterior of the check valve. Spray a small amount of lubricant inside the end of the Revo hose, as shown. Insert the check valve into the Revo hose, ensuring it is installed in the same orientation as the OE hose. Ensure the check valve stops at the approximate position, as shown, inside the Revo hose.



- 7 Slip the OE hose clamps onto each end of the Revo hose. Install the hose as shown, starting with the radiator side. The hose should be oriented similar to the picture.



- 8 Reinstall the airbox sections (installation is the reverse of removal) and ensure the Revo hose has clearance to the OE airbox, as shown.



- 9 Top up the coolant, reinstall the engine cover and refit the coolant reservoir pressure cap. Double check hose clamps for tightness. Start the engine and let the vehicle coolant reach operating temperature. Test drive the vehicle to ensure there are no leaks/part interference during operation. Your installation is now complete!